



24/7

EMERGENCY RESPONSE



READY WHEN YOU ARE

800-637-5471

CORPORATE OVERVIEW

Hulcher Services, Inc. has served the freight and passenger railroads, grain businesses, coal mines and steel mills, environmental consultants and the oil & gas industry since 1963.

As one of the original railroad service contractors, Hulcher has a broad range of services and 30 fully staffed and equipped divisions located in the United States and Mexico ready to respond to your needs.

Whether it's an emergency derailment on a mainline, installation of a switch, a traction motor change or a transfer/load adjustment, you need a contractor with experienced, certified professionals - you need Hulcher Services, Inc.



Denton, TX Headquarters

ABOUT HULCHER

Day or night – Hulcher Services is ready to respond when **YOU** need us.

At the center of our operations is our state-of-the-art Customer Service Center located at our corporate headquarters in Denton, Texas. Operating 24 hours a day, 365 days a year, our service center coordinates the activities for all of our divisions.

Working with Senior Operations Managers, our Staff deploys personnel and equipment to your job within one hour of your call. They also monitor all deployed teams providing updates on work details and location statuses for personnel and equipment as needed.

WHY HULCHER?

- Customer Service Center - Staffed 24/7/365
- Locations coast-to-coast
- e-Rail Safe - All personnel background checked and drug tested
- Extensive heavy & specialized equipment fleet
- Established safety procedures and plans
- Continuous and Targeted Training Program



CORE VALUES

A diverse group of more than 750 professionals who comprise the Hulcher Services' network and who embrace a set of shared values.



SAFETY



COMMUNITIES



QUALITY



PEOPLE



**CONTINUOUS
IMPROVEMENT**

LOCATIONS

Many companies offer contractor services, but few are qualified to work in a railroad environment. Hulcher's equipment operators are some of the best trained and experienced railroad contractor professionals in the industry. Our employees have received training in railroad applications, are current in safety and security certification requirements for all Class I railroads, and have spent years perfecting our craft in maintenance-of-way environments. Hulcher has 30+ division locations available 24 hours a day, 365 days a year giving us the largest service footprint in the industry.



30+

DIVISION LOCATIONS

OUR SERVICES

As one of the top railroad contractors in North America, Hulcher Services, Inc. has served the railroads, grain businesses, government agencies and various industries such as coal, steel and oil & gas for over 50 years providing a wide range of services.

Hulcher offers a wide range of unique services for the railroads and for our various industry customers.

Our services include:

- Railroad & Mechanical
- Engineering, Track Maintenance & MOW
- Transfer & Load Adjustment
- Environmental & Industrial Services
- Disaster & Emergency Response
- Maintenance Work

56,668
TOTAL OF JOBS

SINCE 2013



RAILROAD & MECHANICAL

Hulcher Services pioneered derailment services with innovative techniques to clear the right-of-way quickly allowing the railroads to reopen track to traffic faster.

Trained and certified to work for all Class I railroads, Hulcher's crews can respond to any derailment situation to re-open tracks, remove any product and clean up the site.

CAPABILITIES

- **Derailment Response**
 - Rerail of locomotives and rail cars
 - Removal of unservicable locomotives and rail cars from the track or yards
 - Removal of damaged track due to derailment
- **Traction Motor/Wheel Changes**
- **Locomotive Services & Trucks (LST)**
- **Post Derailment**
 - Grade for rerail/repair
 - Delivery and install of track panel
 - Clean-up spilled materials
 - Commodity salvage and transfer
 - Disposal or transport of unsalvageable materials
- **Load Out & Tie Down Services**
 - Transport of damaged locomotives and rail cars
 - Load out and tie down of large equipment and freight



BEFORE



AFTER

HULCHER ON THE JOB



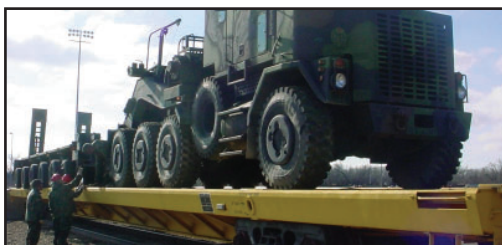
DERAILMENT RESPONSE



LOCOMOTIVE SERVICES & TRUCKS (LST)



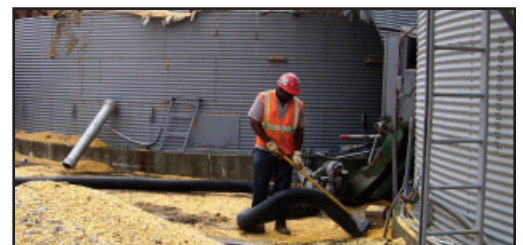
TRACTION MOTOR CHANGES



TIE DOWN MILITARY



WHEEL CHANGES



CLEAN-UP SPILL

ENGINEERING, TRACK MAINTENANCE & MOW

As one of the top railroad contractors in North America, Hulcher has over 50 years of experience assisting the railroads, grain businesses, general industry and government with a variety of engineering, track maintenance and maintenance of way (MOW) work.

Whether it's removing and installing a new switch or diamond or replacing a railroad crossing, Hulcher has experienced, trained and skilled professionals who are ready to respond when you are.

CAPABILITIES

- **Installation and Removal of Switches, Diamonds, Retarders, Turnouts, and Track Panel**
- **Railroad Crossing Construction**
 - Demolish old crossing
 - Remove old track panel and install new track panel
 - Dispose of old gravel, asphalt, and other materials
- **Vac Truck Services - Around Switches, Bridges, Tunnels, Air Excavation with Vac Truck and Air Spade, Switch Winterization**
- **Grade Stabilization, Erosion Control, Flood Control & Ditch/Culvert Work**
- **Specialty Engineering Services**
 - Pile driving
 - Undercutting
 - Water drainage

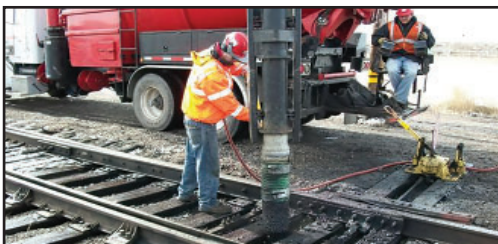


BEFORE



AFTER

HULCHER ON THE JOB



AIR EXCAVATION



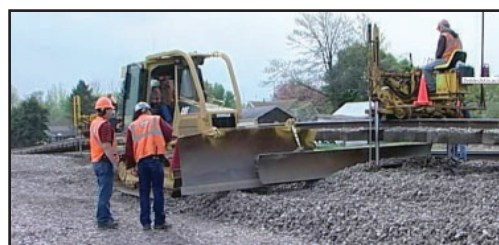
GRADE STABILIZATION (MOW)



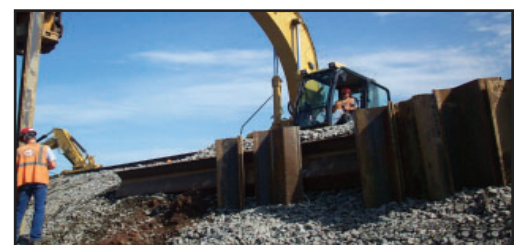
CROSSING CONSTRUCTION



RETARDERS INSTALLATION



UNDERCUTTING



PILE DRIVING

TRANSFER & LOAD ADJUSTMENT

Glenn Hulcher created a unique industry when he began servicing the railroads more than 50 years ago. Since then the company has continued to expand our capabilities becoming the leader in load transfer & adjustment services for our railroad, intermodal, grain and general industry customers. Today, we provide transfer and load adjustment services throughout the United States and Mexico.

CAPABILITIES

- **Commodity Salvage and Recovery**
- **Load Transfer, Adjustments & Reductions**
- **Grain Silo/Bin Clean-up**
- **Rail Car Cleaning**
- **Intermodal Transfer Work**
- **Bulk Transfers & Transloading**



BEFORE



AFTER

HULCHER ON THE JOB



GRAIN STORAGE TRANSFER



BULK TRANSFER



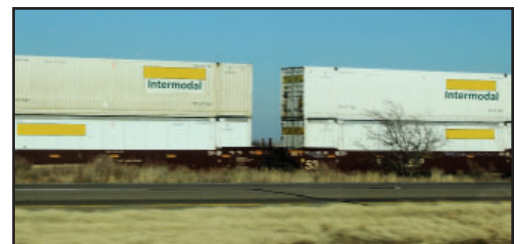
LOAD ADJUST



COMMODITY SALVAGE



TRANSFER LOAD



INTERMODAL TRANSFER WORK

ENVIRONMENTAL & INDUSTRIAL SERVICES

Since 1963, our railroad and industry customers have placed their confidence in Hulcher. We have a staff of environmental professionals who are trained and experienced in a broad range of skills needed for large scale remediation projects, decommissioning and cleaning of tanks and industrial maintenance as well as emergency response work.

CAPABILITIES

- **Soil and Ground Water Remediation**
 - Soil excavation
 - Groundwater treatment systems panel
 - Erosion control systems
- **Site Restoration**
 - Post -derailment site remediation of railroad and private land
 - Fence restoration & installation
 - Grading, disking & establishment of vegetation
- **Industrial Services**
 - Vac truck services
 - Above Ground Storage Tank (AST) cleaning
 - Waste disposal
- **Emergency Response**
 - Level C & D Spills ranging from 2-12



BEFORE



AFTER

HULCHER ON THE JOB



VAC TRUCK SERVICES



GROUNDWATER REMEDIATION



CLEANING A GRAIN HOPPER CAR



SOIL REMEDIATION



TRACK PAN CLEANING



ABOVE GROUND STORAGE CLEANING

** Analysis, containment, treatment, transport, and disposal of material are each conducted in full compliance with relevant federal and applicable state laws/regulations (licensing, permitting, procedural and operational protocol) which sometimes requires the participation of fellow contractors engaged by the customer's and/or Hulcher's subcontractors.*

DISASTER & EMERGENCY RESPONSE

Hurricanes, flooding, tornadoes or snowstorms - Hulcher knows that mother nature is unpredictable and the destruction she leaves behind can critically impact your business costing you time and money. When that happens, we're ready to jump into action.

CAPABILITIES

- **Rock/Debris Removal & Hauling**
- **Environmental Emergency Response & Remediation**
- **Railcar Rerailing & Traction Motor/ Wheel Changes**
- **Track Panel Installation, Replacement & Restoration**
- **Storm Clean-Up & Demolition**
- **Flood Restoration & Washout Renovation**
- **Commodity Salvage & Recovery**
- **Vacuum Truck Services**
- **Environmental Site Remediation & Restoration**

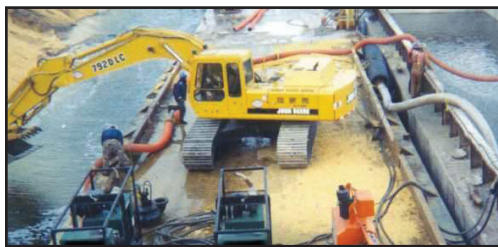


BEFORE



AFTER

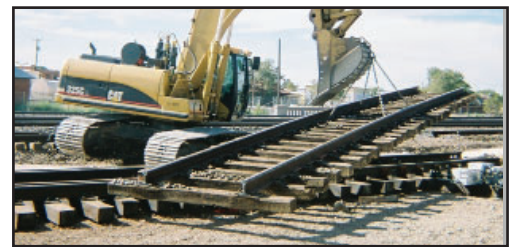
HULCHER ON THE JOB



EMERGENCY REMEDIATION



HAULING & DUMPING



TRACK REMOVAL & INSTALLATION



DEBRIS REMOVAL



STORM CLEAN-UP



FLOOD RESTORATION

** Analysis, containment, treatment, transport, and disposal of material are each conducted in full compliance with relevant federal and applicable state laws/regulations (licensing, permitting, procedural and operational protocol) which sometimes requires the participation of fellow contractors engaged by the customer's and/or Hulcher's subcontractors.*

MAINTENANCE WORK

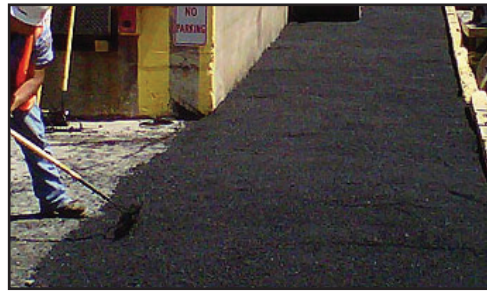
If you operate a rail yard, industrial facility, grain storage facility or trucking operation, you know the to-do list to maintain your property is endless. Hulcher's crews can help you trim that list down to size. Our laborers are background checked, trained and certified to work for all Class I railroads.

CAPABILITIES

- **Asphalt Work**
 - Repaving, patching & resurfacing
 - Grading and building walkways & storage pads
- **Railroad Crossing Demolition & Construction**
- **Construction, Maintenance & Manual Labor**
 - Painting of pipes, poles, etc.
 - Repair/Replace fencing & sound barrier wall
 - Dust Control with water truck
- **Demolition**
 - Grain Silo
 - Signal tower
 - Building demolition & asphalt demolition
- **Hauling & Transportation**
 - Transport equipment, wheels & vehicles along with materials to support railroad workers
- **Vegetation Control**
 - On rail right-of-way OR on rail yard
- **Snow Removal**



BEFORE



AFTER

HULCHER ON THE JOB



BUILDING DEMOLITION



ASPHALT WORK



VEGETATION CONTROL



SNOW REMOVAL



SIGNAL TOWER



SOUND BARRIER



611 Kimberly Drive
Denton, TX 76208
800-637-5471
www.hulcher.com